

2023 SPEC Annual Report



1978 - 2023

45
years

The SPEC Association for Children and Families

Table Of Contents



SPEC at a Glance

Board of Directors

Message from the Board

Management Team

Highlights

Financials

Programs

New Partnerships

Looking Ahead

Contact Us

Since 1978, The SPEC Association has been operating in the Brooks area and is a well-established, valued and highly respected organization in our community, providing critical support and valued-added programs to individuals and families in the City of Brooks and the County of Newell.

SPEC offers a continuum of services providing **information**, **family supports** and **community connection** through a positive and welcoming environment.

This includes a central hub of information and navigational services for all people in Brooks Newell Region, connecting clients with the right information and services to assist them to increase their capacity to deal with life challenges.





SPEC

ASSOCIATION FOR CHILDREN & FAMILIES | EST. 1978

MISSION

Empowering people with information, family supports, and community connection

VISION

A thriving community of resilient individuals and families

OUR BELIEFS

WE BELIEVE ALL PEOPLE

- Have a right to...
 - Well being
 - Be safe
 - Be heard
 - Have hope
 - Be informed
- Have the capacity to change
- Need positive, healthy relationships

We believe in being a vital part of our local, regional, and provincial communities.

WE VALUE

HONESTY

Our work is guided by honesty, integrity, transparency, open communication and ethical conduct.

RESPECT

SPEC values all people as individuals who will be treated with dignity in an environment that is open-minded and non-judgmental.

EMPOWERMENT

We value encouraging the development of self-reliance and resiliency through support and advocacy.

EXCELLENCE IN OUR SERVICE DELIVERY

We value quality services delivered with integrity and best practice.

CONFIDENTIALITY

At SPEC, we promise to honor the trust of people we serve and respect their privacy in our services, within our professional code of ethics.

ACCESSIBILITY

SPEC strives to provide services with minimal barriers to participation.

COMMUNITY CONTRIBUTION AND INVOLVEMENT

We value building relationships with other agencies, programs and resources in the community to better serve children and families.



Meet Our Board



ROBERTA ROGERS

CHAIR
2017 -

TIM PETERS

VICE CHAIR
2022 -



SEPTEMBER PLUMER

TREASURER
2022 -

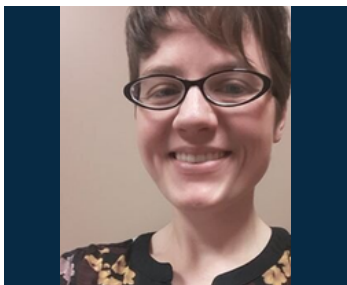
LISA PATTON

SECRETARY
2022 -



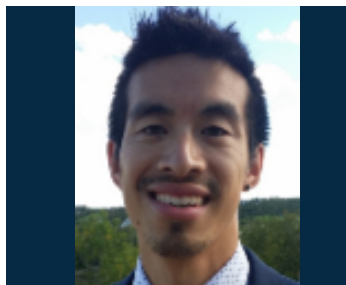
Retiring SPEC Board members

Thank you for your time and talents that you shared with us!



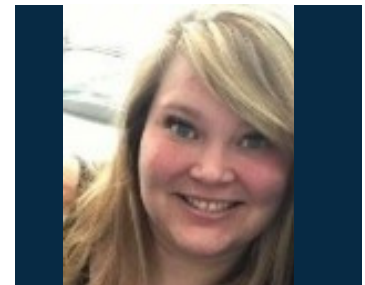
AMY DYCK

2017 - 2022



RICHARD MAK

2020- 2023



JANESSA FORBES

2021 - 2022

Message from the Board

WHO WE ARE AND WHAT WE DO

The SPEC Association offers a continuum of services providing information, family supports and community connection through a positive and welcoming environment. This includes a central hub of information and navigational services for all people in the Brooks Newell Region, connecting clients with the right information and services to assist them to increase their capacity to deal with life challenges.

KEY FOCUS AREAS

- Programming – Relevant to community needs and are aligned and integrated with our Mission and Vision
- Sustainability - Ensuring diversification with our Funding Contracts and Grants
- Community – Increase community awareness and collaboration
- Facilities – Ensure facilities meet the needs of programs
- Employee Well Being – Creating an engaging and balanced workplace environment

MOVING FORWARD

The board has identified the following priorities: strategic planning, financial sustainability, and policy development. The SPEC Association has been serving Brooks and the County of Newell for 45 years and we are confident, that as an organization, we are in a strong position moving forward and that we will continue to be a major part of building a thriving community filled with resilient individuals and families.

SPECIAL THANKS

The SPEC organization is grateful to our program funders who allow us to continue our operations. These include Children's Services (Government of Alberta), Immigration, Refugees and Citizenship Canada, Grasslands Regional Family & Community Support Services (FCSS), Southeast Alberta Fetal Alcohol Network Society, and City of Brooks. An extra special thanks goes to those individual/family donors who believe in us and what we do!

Sincerely,

Roberta Rogers

Board Chair



Meet Our Management Team



AMANDA GOODNOUGH

EXECUTIVE DIRECTOR



ANGELES BONACHITA

FINANCE MANAGER



DEL CHRISTIEN

OFFICE MANAGER



XIN ZHANG

PROGRAM MANAGER
NEWCOMER SERVICES



CHELSEA OPPERMAN

PROGRAM MANAGER
SPEC HUB (FRN)



JENNIFER SCHOLZ

PROGRAM MANAGER
FASD PROGRAMS

Message from the Executive Director

The foundation of all SPEC programs stem from our goal to empower people with the goal of building a thriving community of resilient individuals and families. We do this in the following ways:

- Educating parents builds family well-being and enables children to develop to their full potential.
- Integrating new families into our community supports our schools and local economy.
- Youth programming gives students access to positive adult role models and the opportunity to develop new skills.
- Advocating for and supporting pregnant women experiencing substance abuse challenges assures that children are born healthy and live in safe, stable homes.
- Community support assists individuals in connecting with resources and helps them deal with life's challenges by building on existing strengths and increasing their personal resiliency.

Focusing on the goals developed with the SPEC Board of Directors, I am pleased to report that we have made significant progress, specifically in the areas of Community Engagement, Employee Well-Being and Sustainability. We have secured additional funds through grants and fundraising including but not limited to:

- Community Initiatives Program (CIP) \$68,100 over 2 years for administrative staff, operating, and organizational development costs (2 yr Finance Assistant) through the Ministry of Culture and Status of Women.
- Newell District 4-H Steer Sale raised \$15,211.09 for MakerSpace
- Alberta Charitable Gaming Casino \$15,500.68
- McHappy Day total \$12,632.52 (SPEC \$9,474 and RMHC \$3,158) – highest out of all McDonald's in Western Canada

I am exceedingly thankful for our SPEC-tacular staff and volunteers who continually go above and beyond to provide support and care to the people in our community. The SPEC Association is proud to contribute to the Brooks Newell Region and is excited to see what the future holds moving forward.

Sincerely,

Amanda Goodnough

Executive Director

Highlights



WHAT HAVE WE DONE THIS YEAR?

SPEC's programs and activities, provided to 3,589 unique individuals, are the result of the dedicated efforts of 28 full time, 7 part time and casual staff along with the 69 volunteers who devoted time to SPEC over the last year. Our volunteers dedicated 3,061 recorded hours as program, casual and board volunteers – a major gift of time on which we rely and are extremely grateful for.

HIGHLIGHTS

- SPEC was presented with the Community Spirit award by the Brooks Chamber of Commerce
- This year we were able to host 8 practicum and 3 work experience students for a total of 2,156 hours. This has allowed us to give back to our community by building onto the academic learning of local students while increasing their real-world work skills.
- Wrote multiple letters of support for other community partners to be able to increase their programs and services
- Partnership with Little Rock Consulting to bring consistent high quality professional development training to staff.
- Partnered with other organizations to add to the services available in this area including Palliser PCN and Big Brothers Big Sisters Medicine Hat.

Congratulations

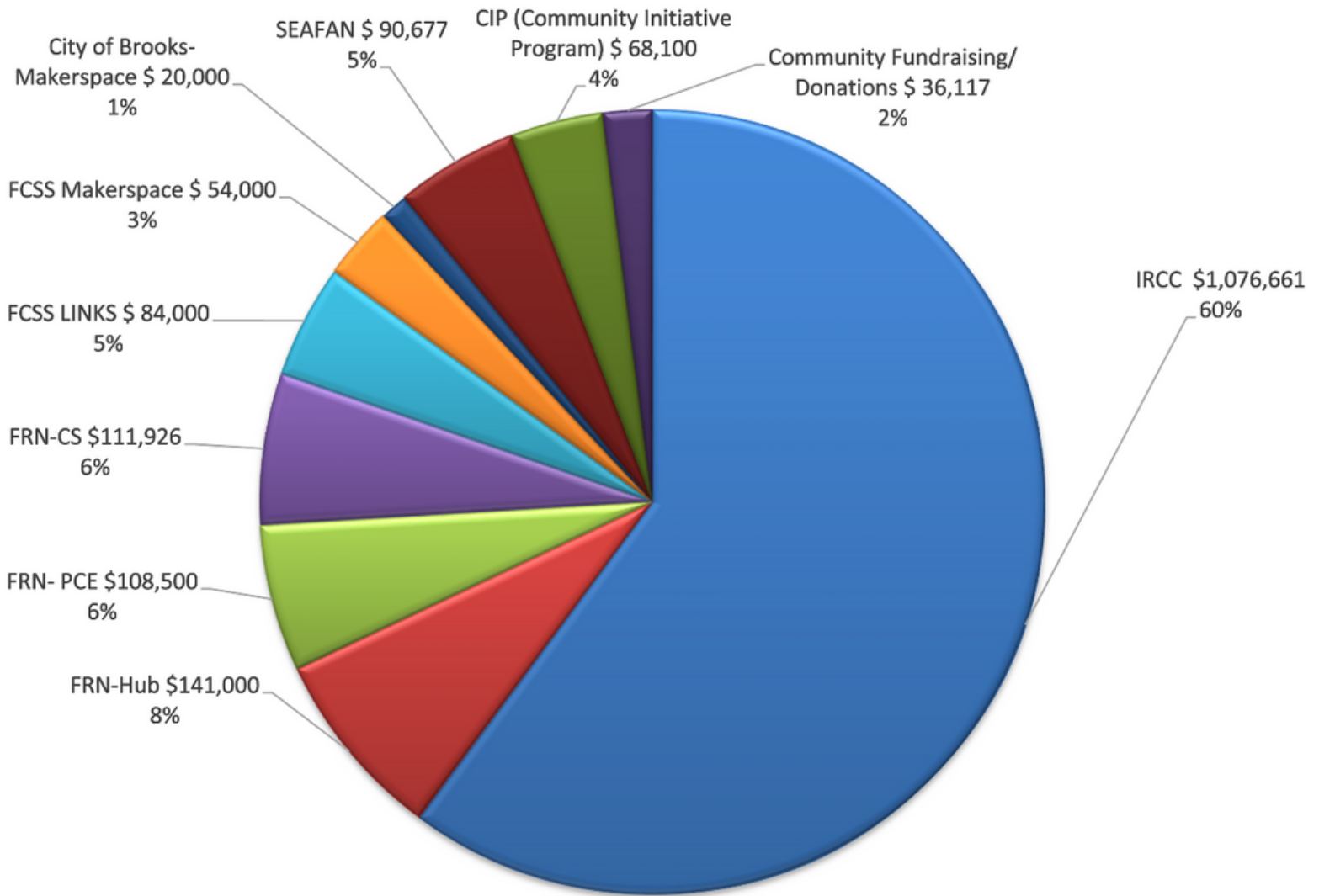
Congratulations to Roberta Rogers, Amanda Goodnough, and Del Christien on being awarded the Queen Elizabeth II's Platinum Jubilee Award!

This award was given to 7,000 Albertans through 2022 in recognition of their significant contributions to the province



Contracts for Fiscal Year April 1, 2022 – March 31, 2023

Total \$1,790,981



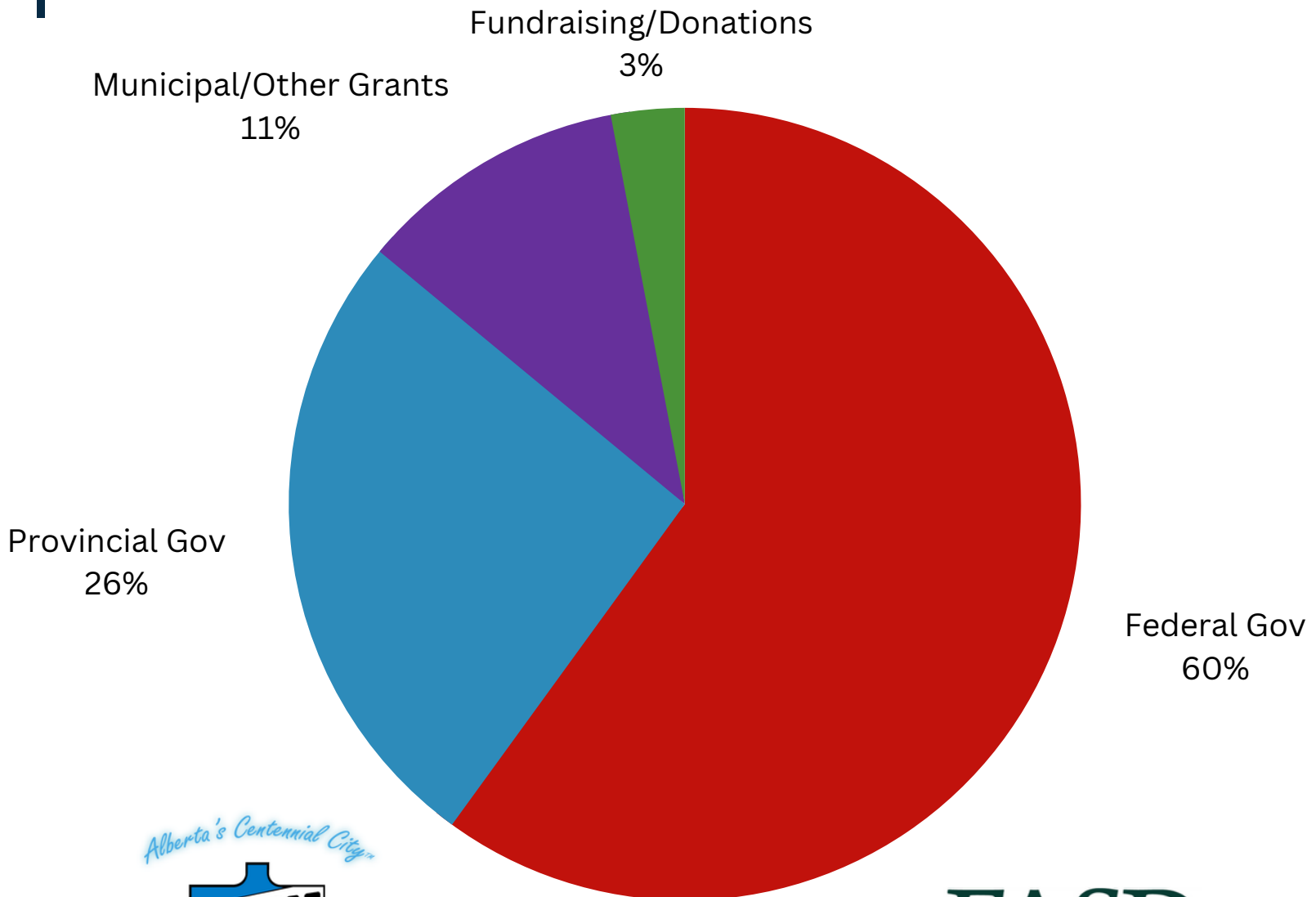
Revenue Comparison		
2022-2023	2021-2022	2020-2021
\$1,790,981	\$1,660,110	\$1,561,510

Financial Statements



	2022-2023	2021-2022	2020-2021
Revenue	\$1,752,646	\$1,660,110	\$1,561,510
Expenses	1,775,032	1,638,462	1,577,648
Operating Net	(23,386)	21,648	(16,138)
Amortization	(1,954)	5,873	18,551
Net	(24,340)	27,521	2,413

Where does SPEC receive its funding?



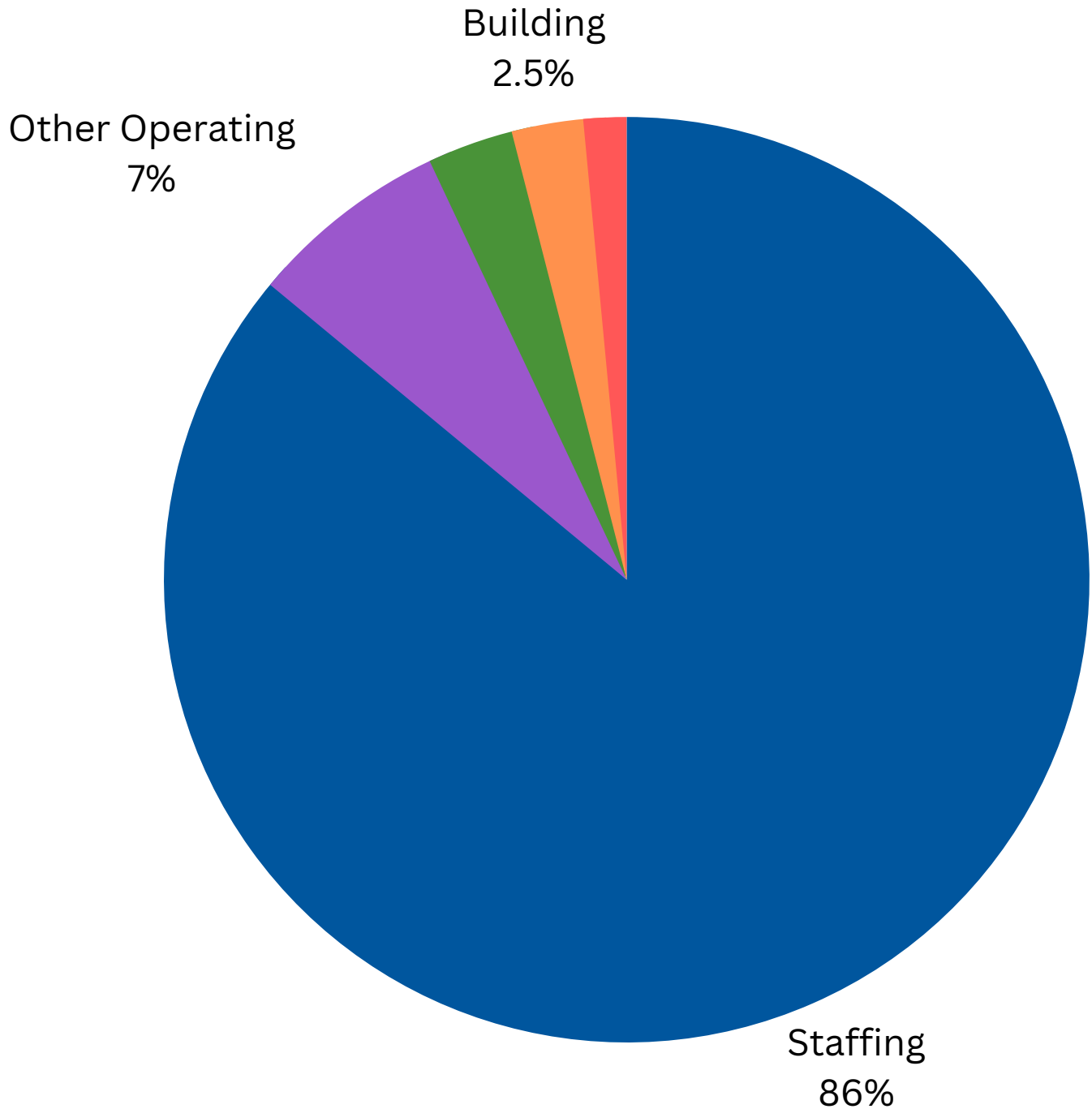
Alberta's Centennial City



Immigration, Refugees and Citizenship Canada

Immigration, Réfugiés et Citoyenneté Canada

Where does SPEC spend its funding?



Staffing	86%
Other Operating	7%
Program Delivery	3%
Building	2.5%
Admin/Amortization	1.5%

2022-2023

Unique Clients Served	1,871
Total Client Visits	7,391
NFLW hosted 144 community groups	
SWIS hosted 194 groups in schools	
HIPPY supported 31 children and their parents	



SPEC LINKS offers a wide range of services to newcomer refugee and immigrant individuals, children, and families to support their integration and participation within Canadian society.

Services introduce individuals and groups to information and orientation services, and community connections activities. SPEC LINKS offer various life skills activities, encourage community awareness, assist with education and provide referrals to other community resources available in Brooks to meet their clients' needs.

- **Newcomer Family Liaison Workers:** information, advocacy, and life skills
- **Settlement Worker In School (SWIS):** services for students and families from K to Gr 12 to support a smooth transition to the Canadian school system
- **Home Instruction for Parents of Preschool Youngsters (HIPPY):** works with mothers of preschoolers (3-5yrs) to enhance their English skills, provide community integration and help prepare their children for school

18 languages spoken by LINKS Newcomer Staff

Oromo, Harari, Urdu, Panjabi, Somali, Swahili, Spanish, Cambodian, Tagalog, Arabic, Amharic, Tigrinya, Portuguese, Hindi, Mandarin, Ukrainian, Russian, and Hibru



2022-2023

Hosted 16 different groups with 936 clients

42 Community Events reaching 7,923 people

4 Information Sessions with 51 participants



BROOKS & AREA
Family Resource Network



The SPEC HUB is part of the Family Resource Network (FRN) providing information, referral and service navigation for families who have children 0 – 18yrs.

Parent Education builds parenting confidence and skills by providing individual and group parenting programs, information, and support.

Community Services provide general information and advocacy to assist families to connect with existing community and/or government resources.



2022-2023	
Unique Clients Served	156
Total Client Visits	1,329
Hosted 45 Groups with 198 participants	



**SPEC
COMMUNITY
SERVICES**



WE ARE HERE TO HELP!

Community Support staff provide direct client service to adults, age 18+, who are needing supports unrelated to parenting and family issues, who may be facing barriers. General information and advocacy are also available to assist individuals to connect with existing community and/or government resources. Program supports endeavor to help individuals deal with life's challenges by building on existing strengths and increasing personal resiliency

*~ mental health challenges ~ unemployment ~ lack of housing ~ language barriers ~
~ financial issues ~ education levels ~ literacy ~ physical health challenges ~ addictions*

Our Men's Group meets weekly to learn basic life skills and at the same time practice building relationships with others. This has been a valuable program especially given increased mental health pressures and social isolation that so many individuals are dealing with post COVID.

— **MARLYS CYR**
Community Services
The SPEC Association



2022-2023	
Clients	8
Waitlisted	4
4 Healthy Babies Born	



SPEC'S First Steps Advocate (PCAP) provides services and supports for pregnant women or women who are up to 12 months post-partum that have experienced alcohol or other substance use and who would benefit from connections to supports and resources.

Participants are never asked to leave the program if they relapse or experience set-backs

Goals of PCAP

- To help parents build and maintain healthy family lives
- Assure children have safe and stable homes
- Prevent future drug and alcohol affected pregnancies





SPEC
BROOKS & REGION
MakerSpace

2022-2023

Unique Youth Served

274

Total Participant Visits

3,148

WHERE ANYONE CAN MAKE ANYTHING

MakerSpace offers a variety of learning opportunities, programs, and workshops where youth learn to integrate STEM activities while developing meaningful relationships which will assist them in dealing with life's challenges by building on existing strengths and increasing personal resilience. The capacity for youth to acquire and apply knowledge and skills to real world circumstances, under one roof with their peers and volunteer mentors, builds comradery and motivation to help prevent and/or alleviate mental health issues that are common to youth today.



Brooks & Region
MakerSpace

MAKERS GONNA MAKE



New Partnerships



Behavioural Health Consultant

The Behavioural Health Consultant is housed at SPEC and uses a team-based approach to provide efficient, effective and innovative resources to support children and youth's mental health by providing mental health services, assessments and tools in supporting and education in Mental Health literacy. Appointments are available for ages 10-17 yrs and are booked in 30-minute increments, with follow-up appointments as needed.

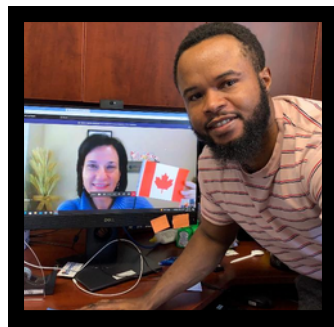


Mentorship Coordinator Brooks Newell Region

The Mentorship Coordinator is a shared position between SPEC and Big Brothers Big Sisters who is focusing on recruiting adult mentors and will be providing oversight and local support within the Brooks Newell Region



Building a thriving community



Looking Ahead



YOUTH CONNECTIONS

the MeZZ

AT THE JBS CANADA CENTER

FREE DROP-IN

AGES 11-17

WEDNESDAY, 3 MAY. AT 3:30 PM

SNACKS . GAMES . PRIZES

Phone: 403-362-5056

Shawna Youth Connections Coordinator

SPEC Alberta Provincial Family Resource Networks



Volunteers Needed!

SPEC
In partnership with SPEC Association for Children & Families

Big Brothers Big Sisters OF MEDICINE HAT AND DISTRICT

#BIGGERTOGETHER

HOW YOU CAN HELP :

- Be a Big (set your hours)
- Be a bingo volunteer
- Participate in a fundraising event
- Now serving Brooks!

Have questions? Contact us!
403 527 6640
www.bbbsmedhat.ca

Inquire Today!

#smilecookie
Tim Hortons

YOUTH CONNECTIONS

MAKERSPACE MONDAYS

Join Youth Connections during Mini Makerspace to discover what Makerspace is all about, while making new friends

FREE PROGRAM
Monday, Sept 11th
3:30 PM to 5PM
SPEC RM 118
Youth ages 7-10

Contact Shawna at 403-362-5056

PERMANENT LOCATION MEANS NEW OPPORTUNITIES


We have moved out of the old building to the SPEC location at 327 3rd Street West, Brooks, AB. Meet us in room 118!

SCHOOL HOURS ARE COMING IN HOT

With school rolling in we got our school hours back

- Mon 3 - 6pm - MiniMakers (7-10yrs)
- Tues 3 - 6pm
- Wed 3:30 - 6pm Mezz Wednesday @ JBS Centre
- Thurs 3 - 6pm
- Friday 12 - 6pm

@BROOKSMAKERSPACE



**NOW
WHAT?**

Do you want to be a part of building a thriving community of resilient individuals and families?

SPEC is always looking for community minded individuals to join our team. By volunteering you can impact the lives of many individuals and families who are facing challenges in our community.

The investment of your time or sharing of your skills will create a bright future for many.

**ALONE WE CAN DO SO LITTLE;
TOGETHER WE CAN DO SO MUCH.**

- HELEN KELLER





Contact Us



403-362-5056



home@spec.ab.ca



www.spec.ab.ca